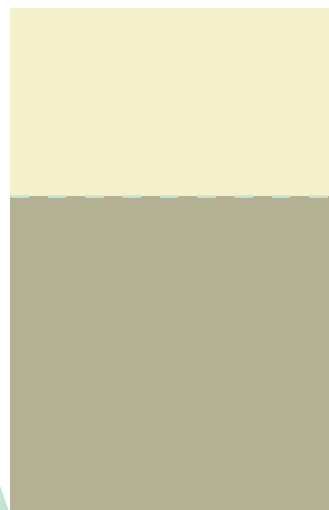
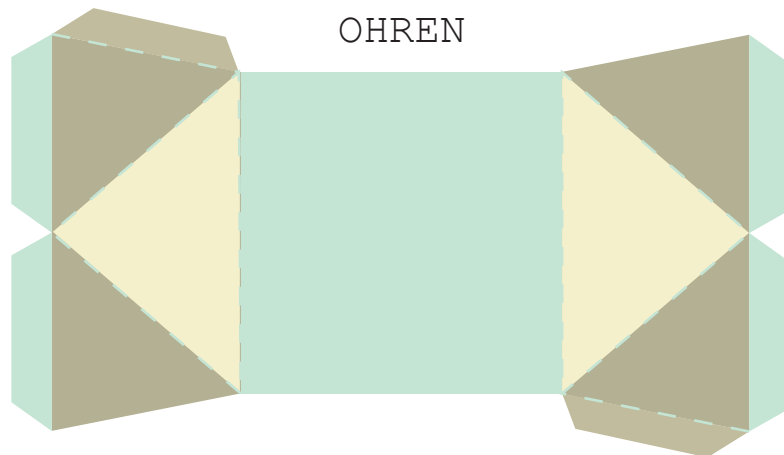


EULE



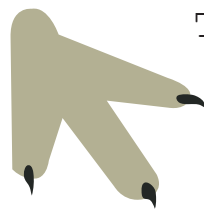
FLÜGEL



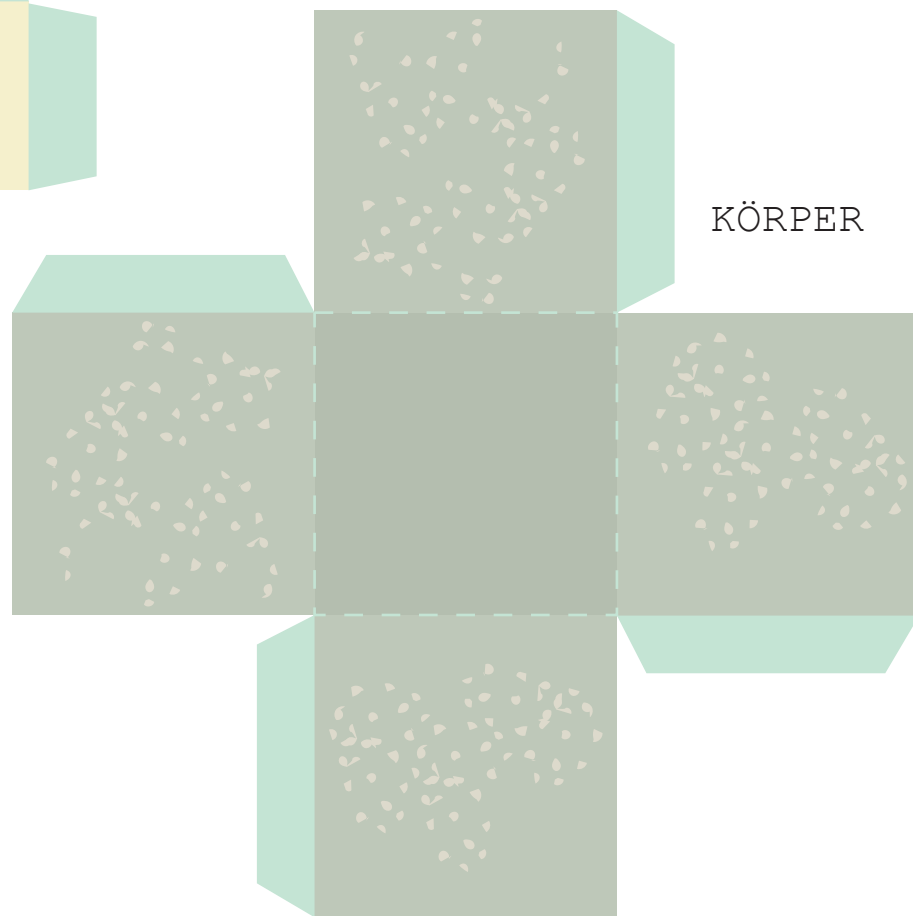
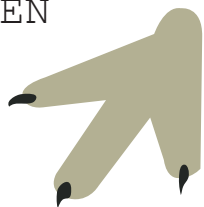
OHREN



KOPF



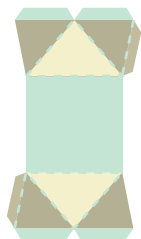
TATZEN



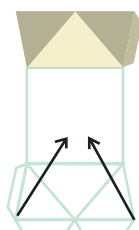
KÖRPER

FLÜGEL

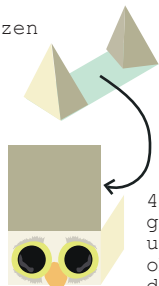
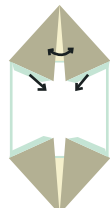
1. Zuerst alle gestrichelten Linien falzen



2. auf die Rückseite falzen



3. Falte beide Dreiecke in die Mitte und klebe sie zusammen



4. Klebe die grüne Fläche unter die obere Fläche des Kopfs

